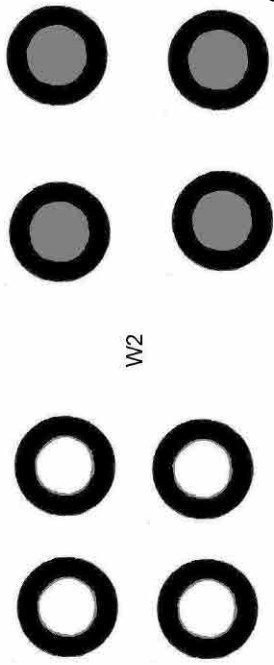


14a
Lights
Lampen

Mirror / Spiegel

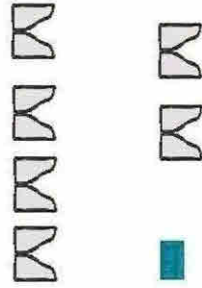


Wheels / Räder



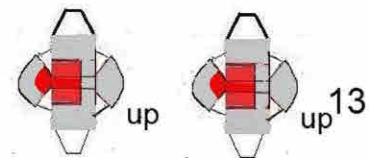
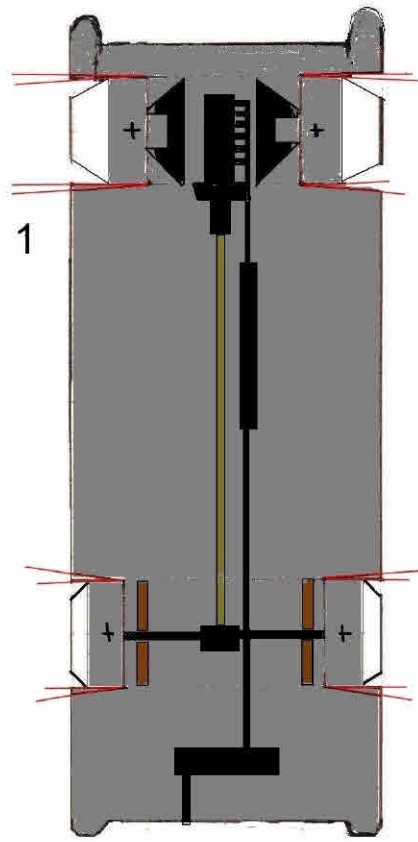
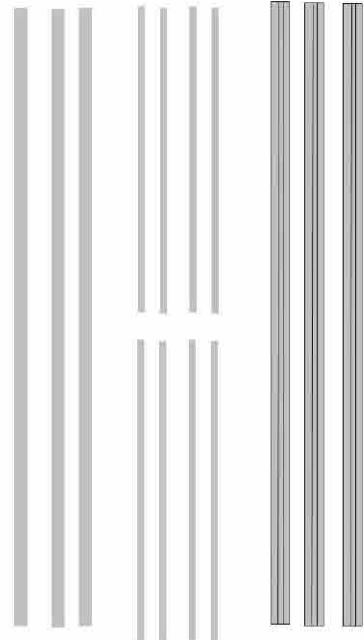
W2

Hood Ornament

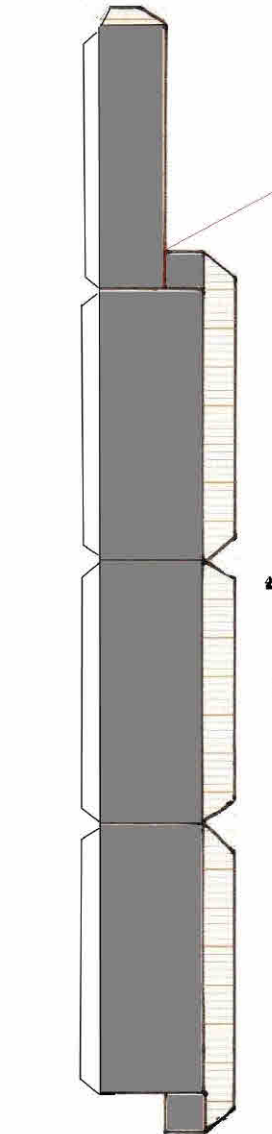


Plates
Nummernschilder

Chrome / Zierleisten

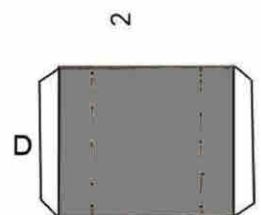


Backlights
Rücklichter

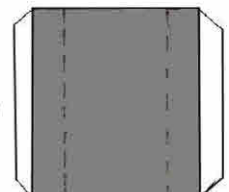


4

Frontside

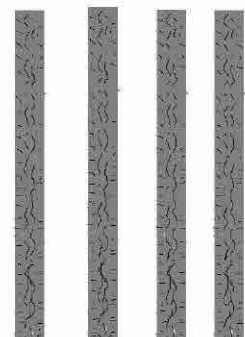


2



3

Tire/ Lauffläche



W3

Grille

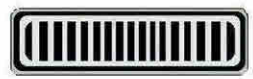


11a



11a2

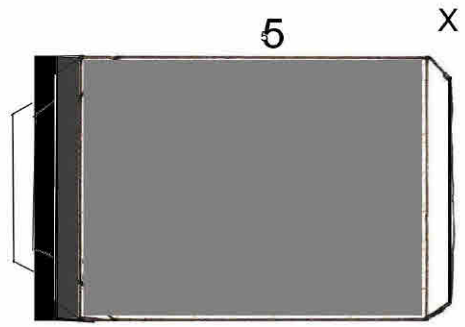
Grille/ Grill



11a

X

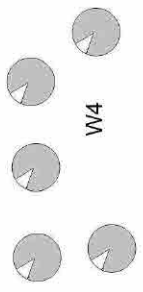
Back



5

Front

Hubcaps/ Radkappen



W4

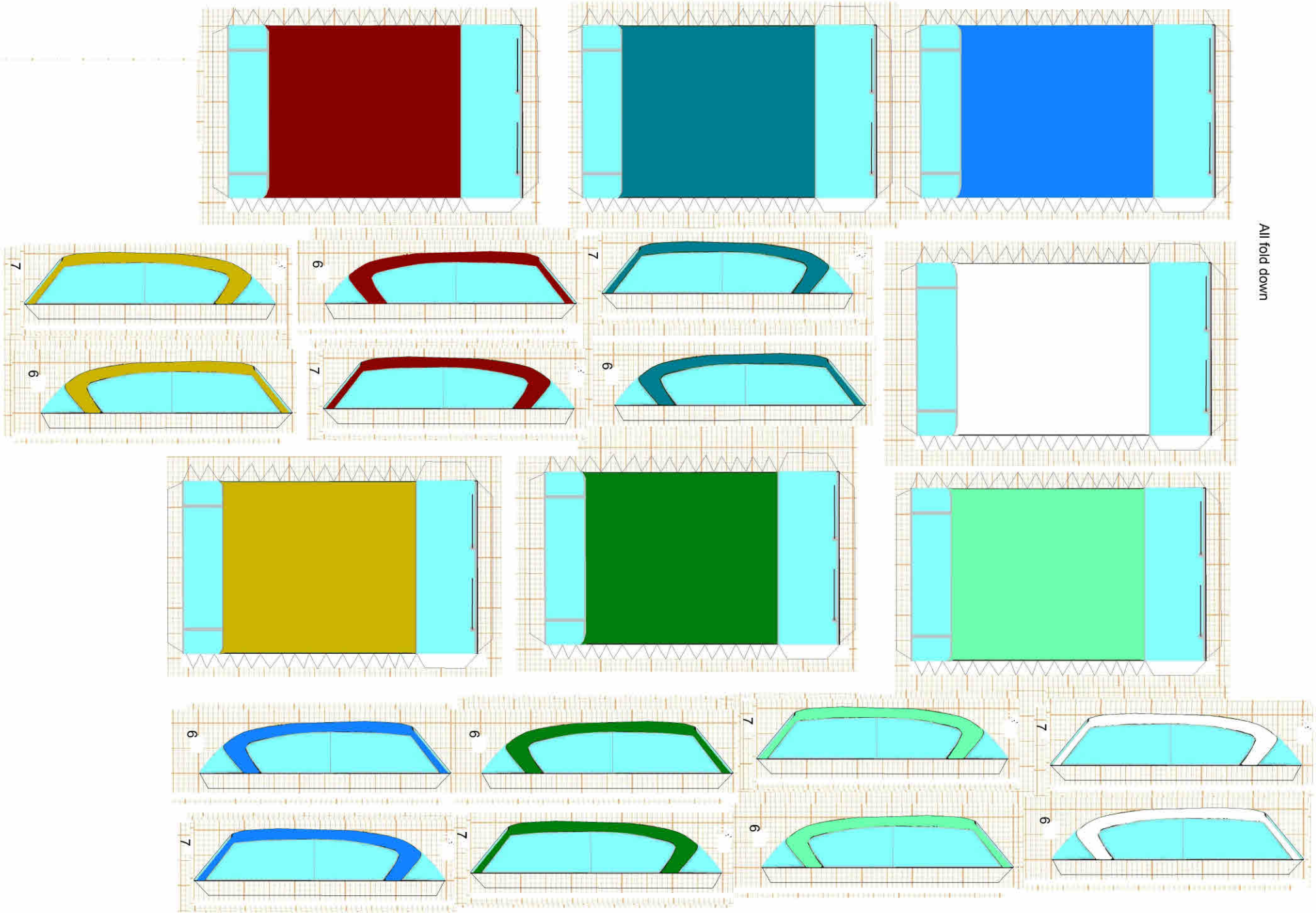


turn signals
Blinker

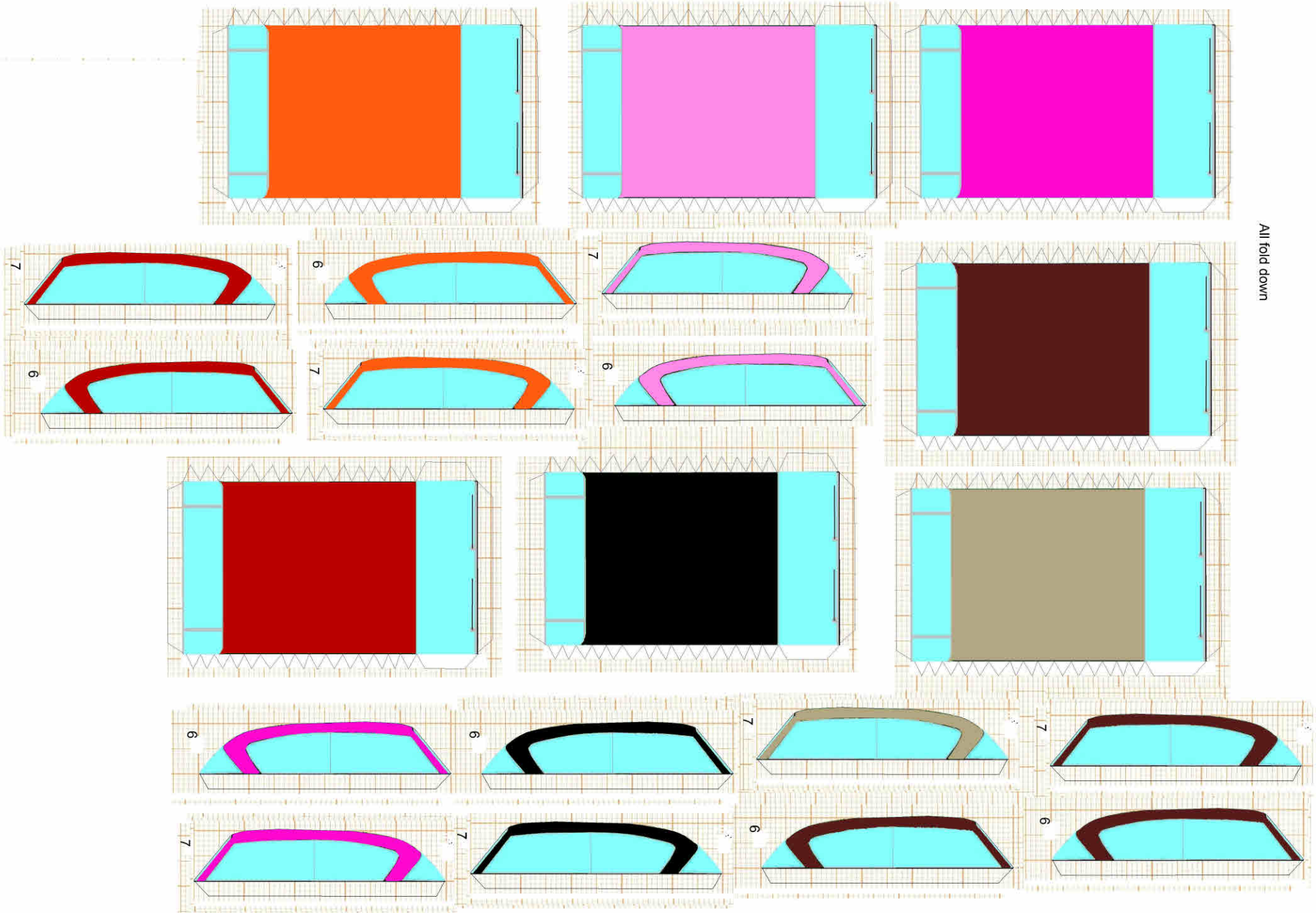
Glue S2 on S1



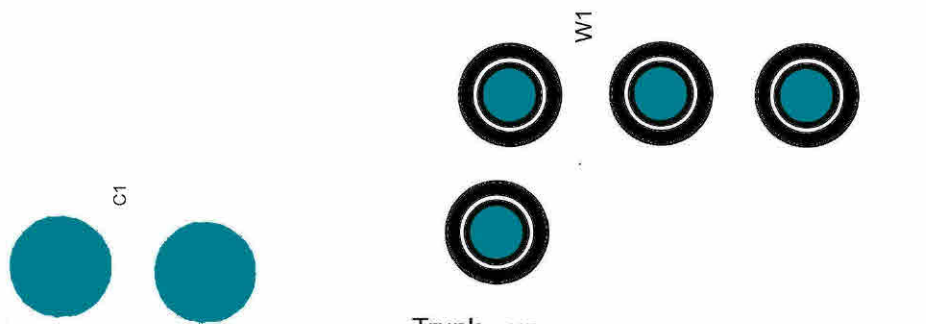
Signs



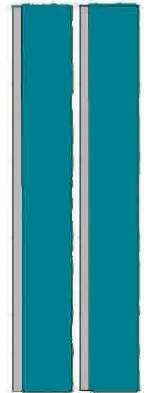
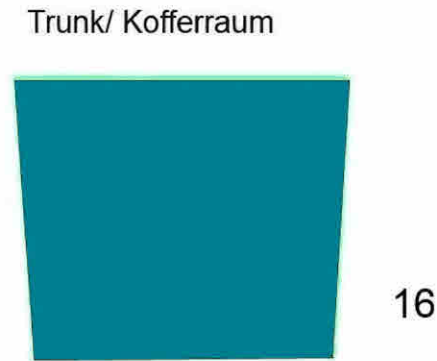
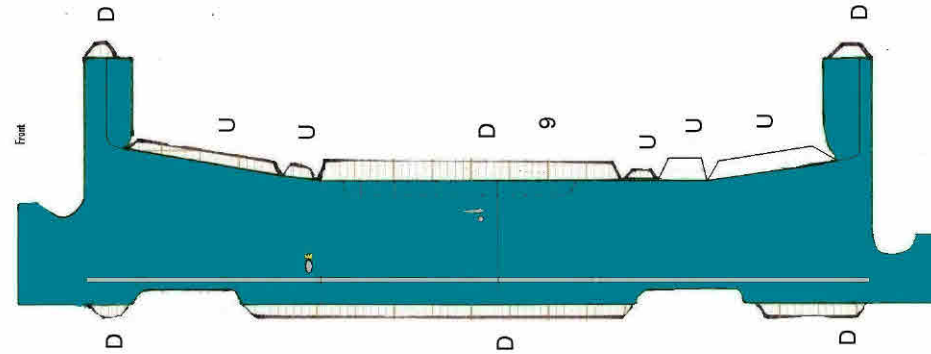
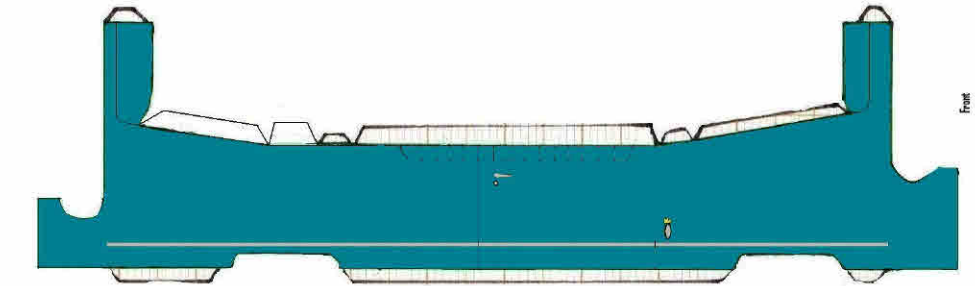
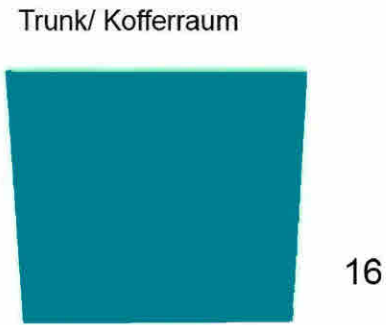
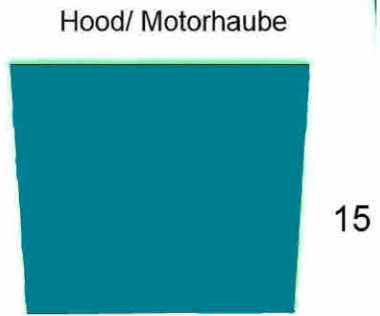
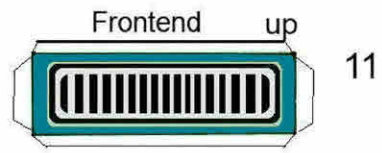
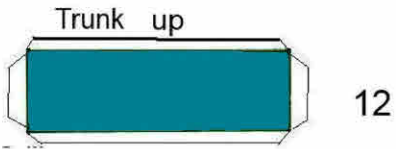
All fold down



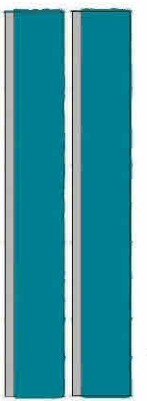
All fold down



^C2

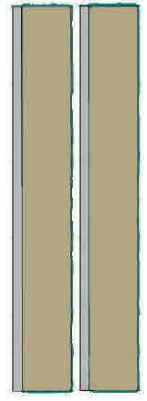
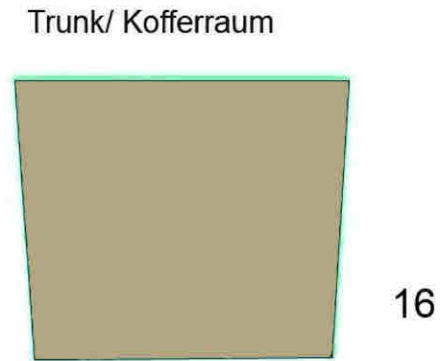
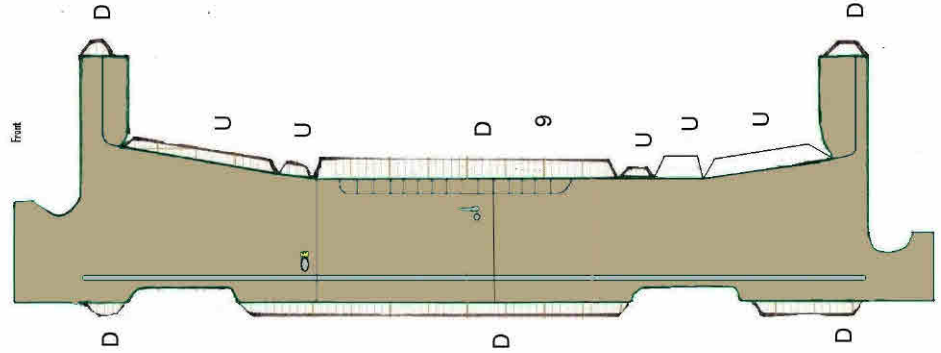
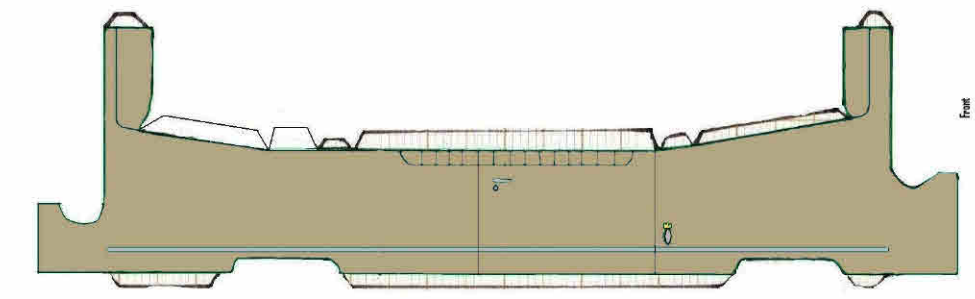
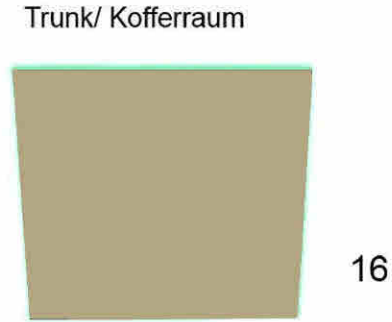
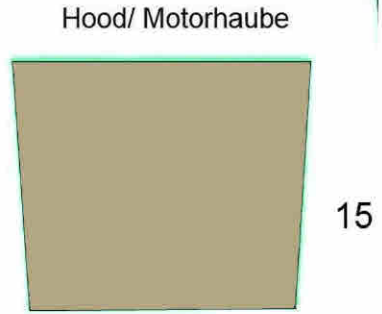
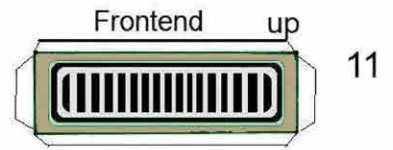
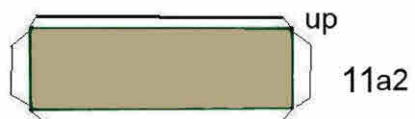
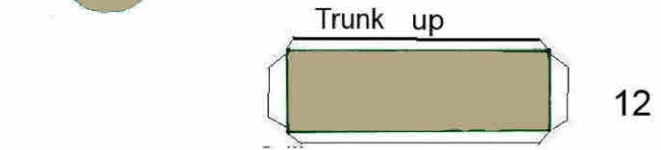
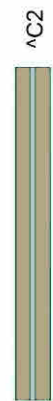
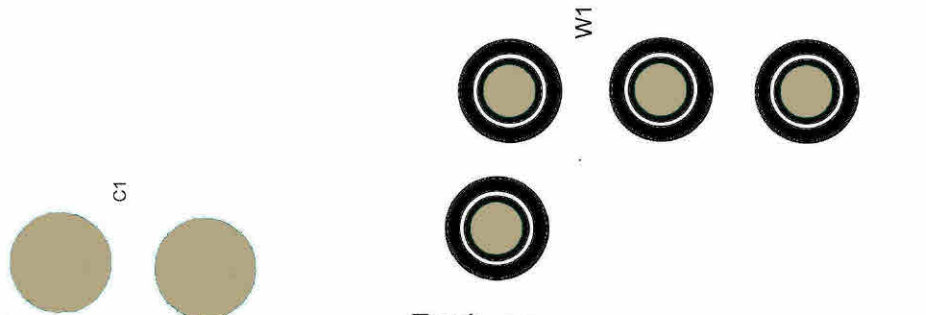


Frontlights

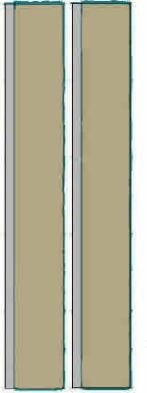


14

Lampentöpfe

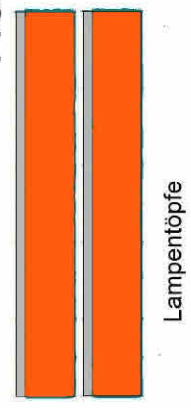
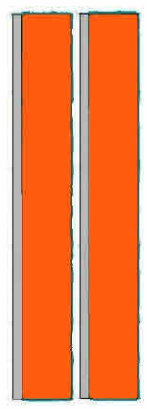
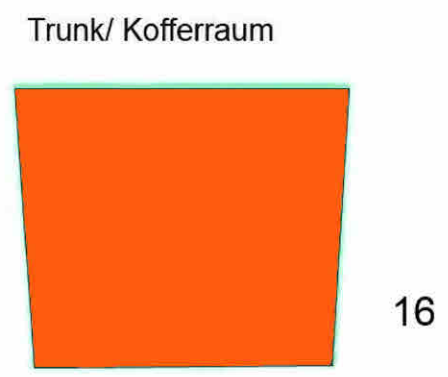
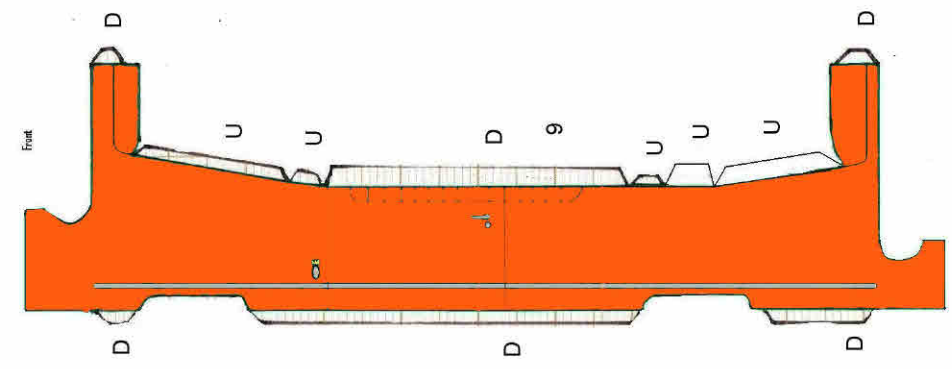
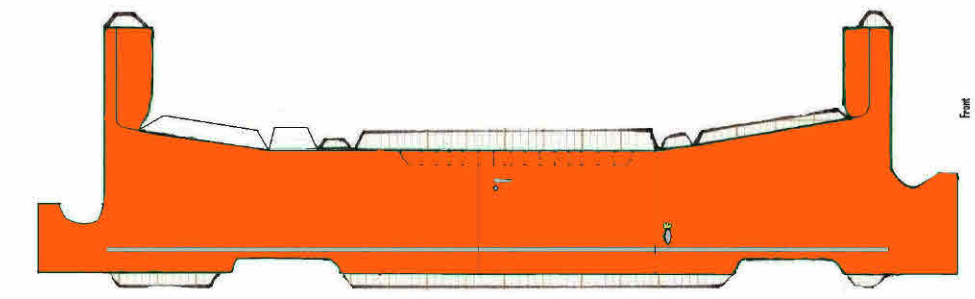
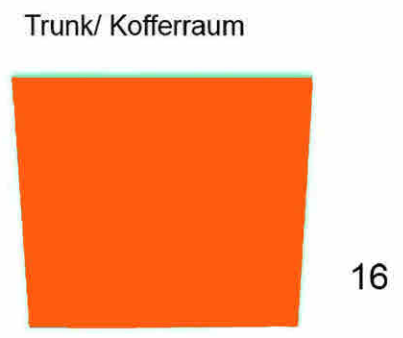
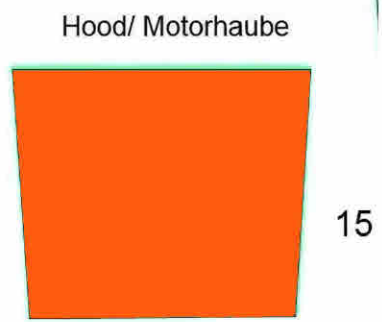
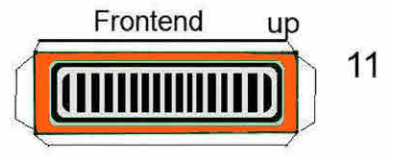
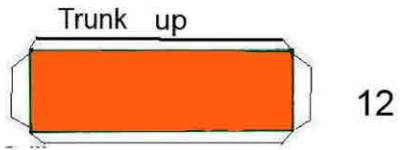
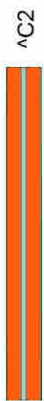
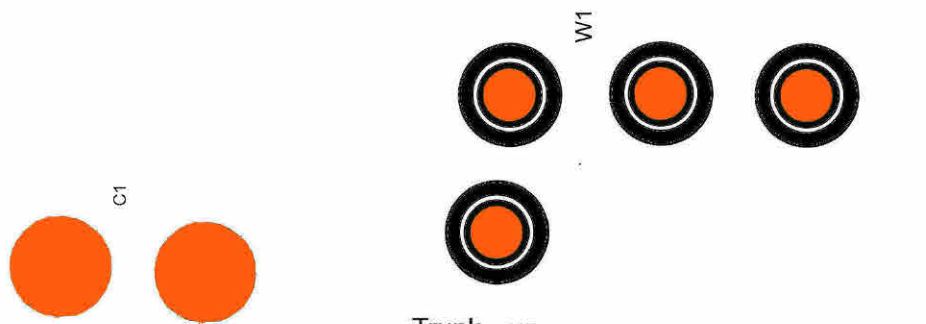


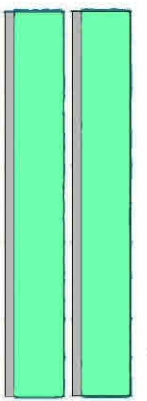
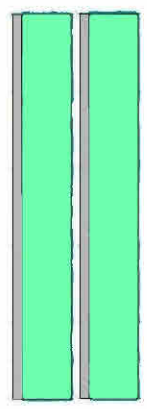
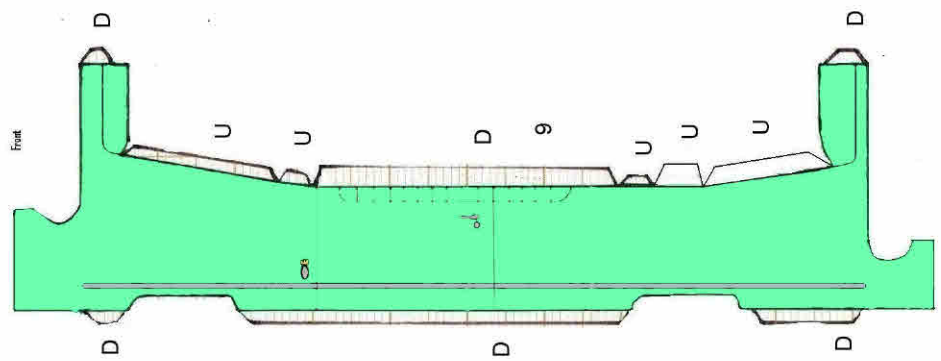
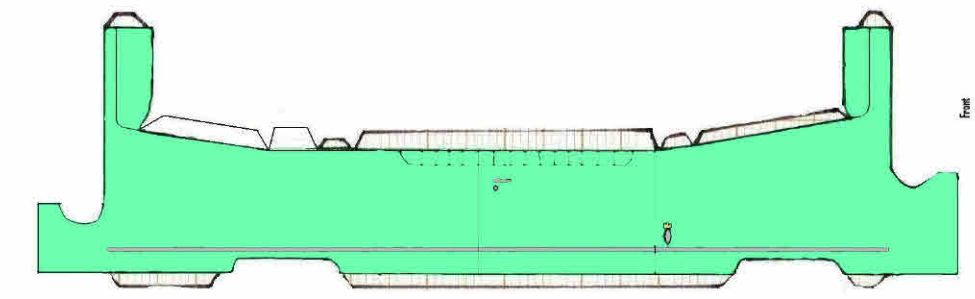
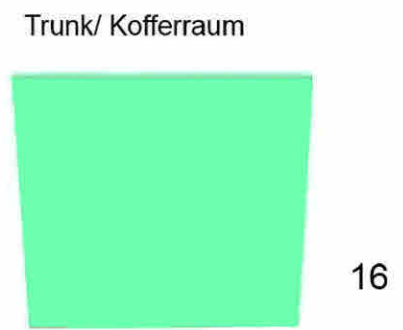
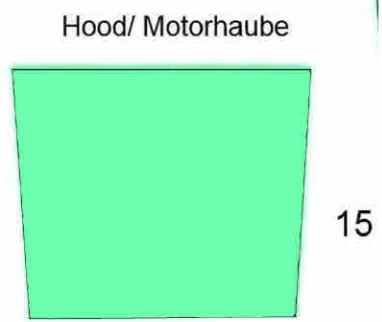
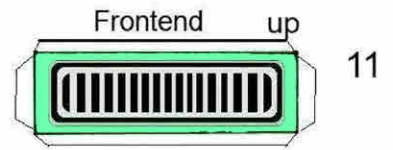
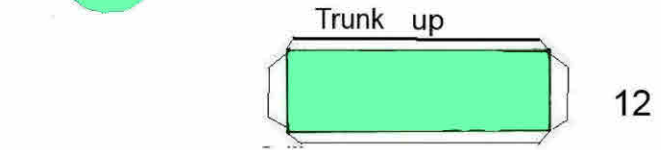
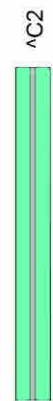
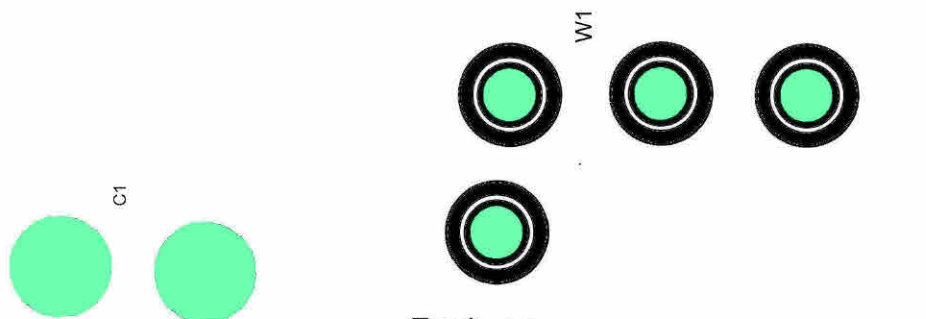
Frontlights



Lampentöpfe

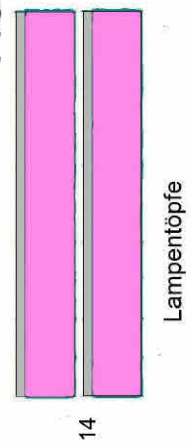
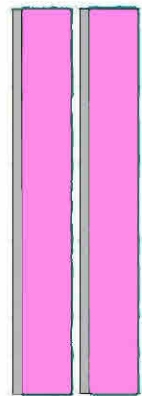
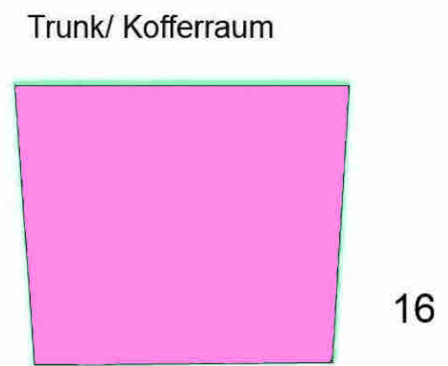
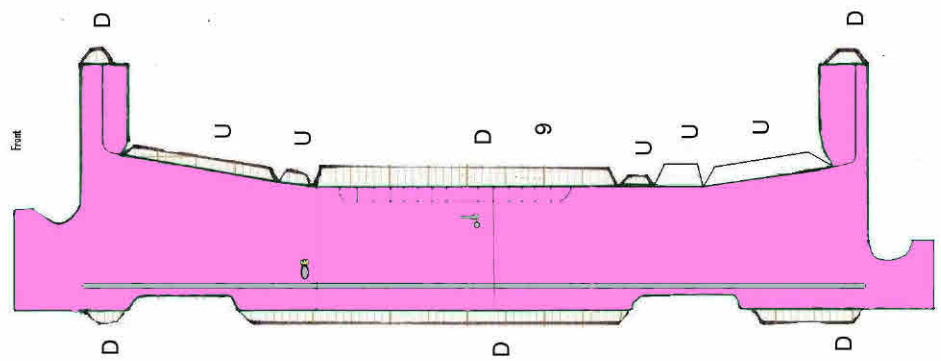
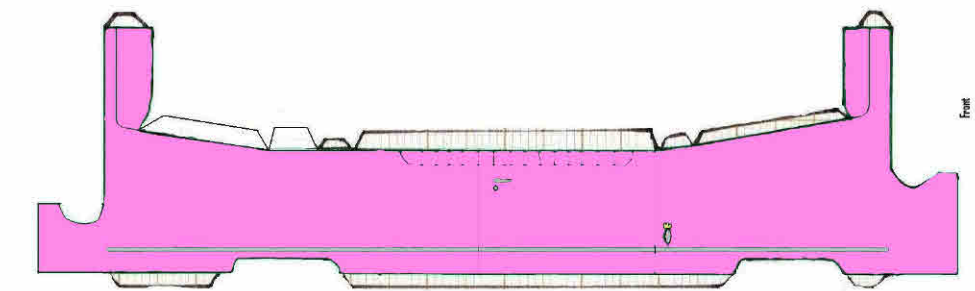
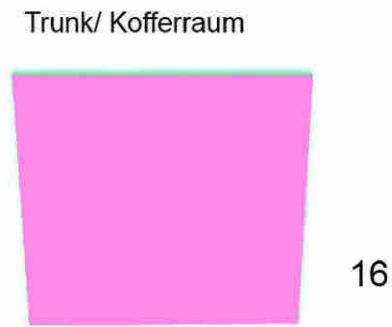
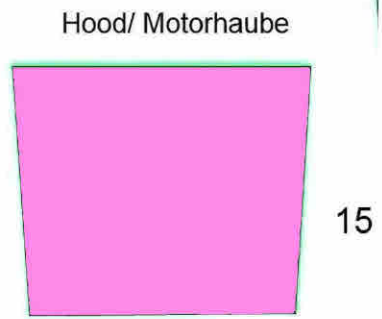
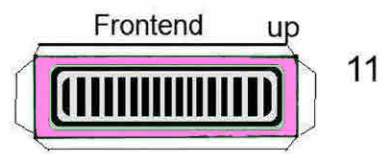
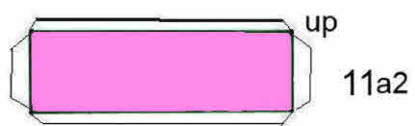
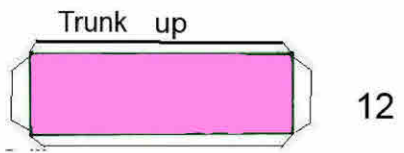
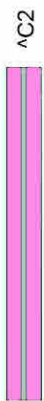
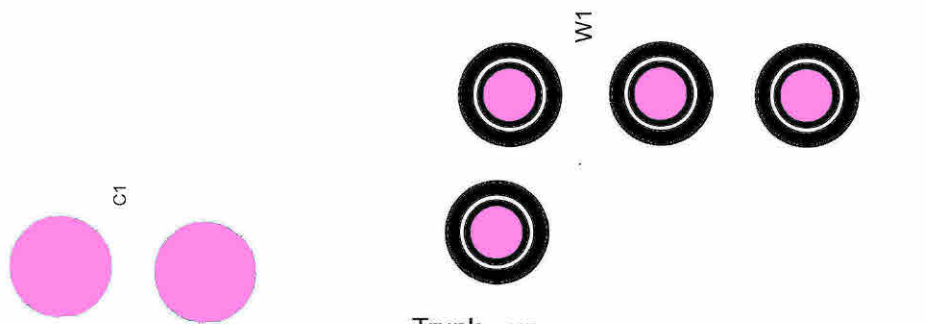
14

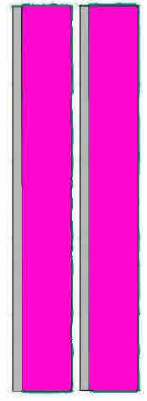
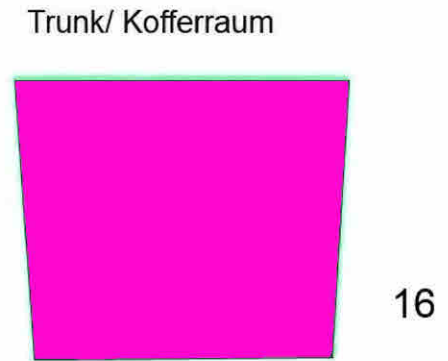
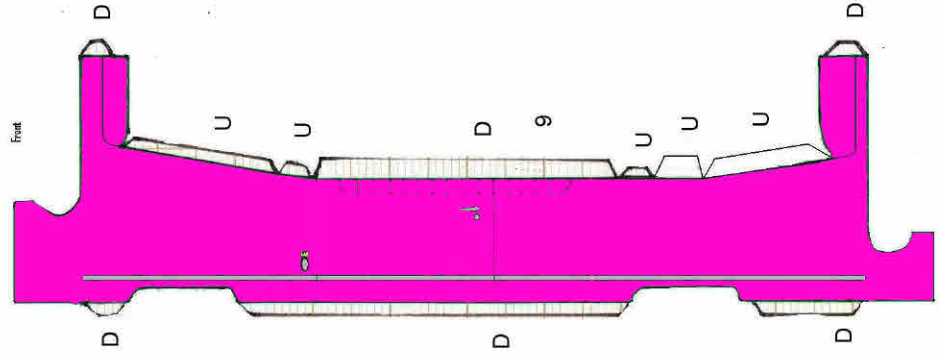
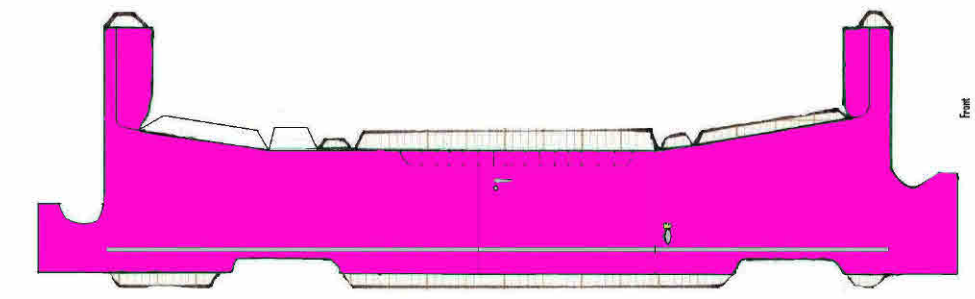
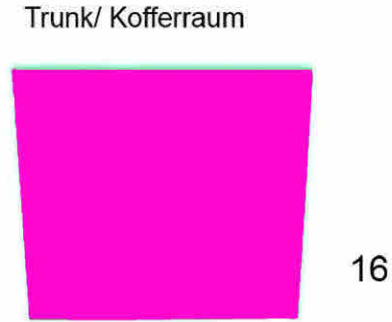
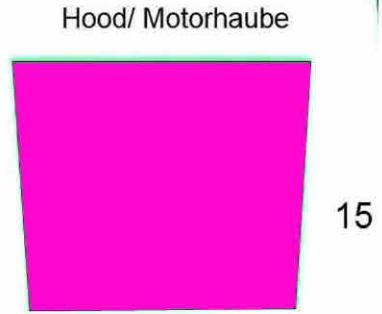
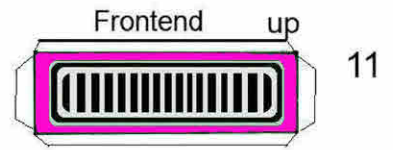
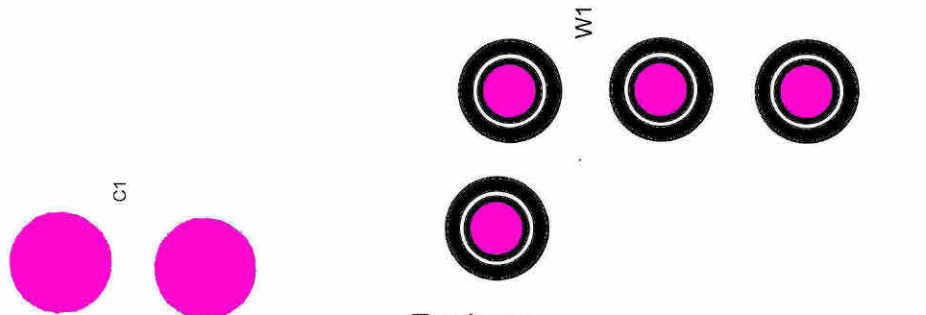




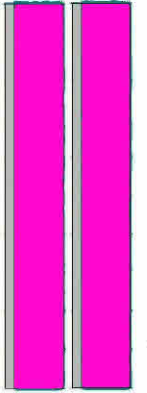
Frontlights

Lampentöpfe





Frontlights



Lampentöpfe

14

Nesh Ambassador

Instruction / Bauanleitung

Caution: Some parts look different from pics. Einige Teile wurden geändert.

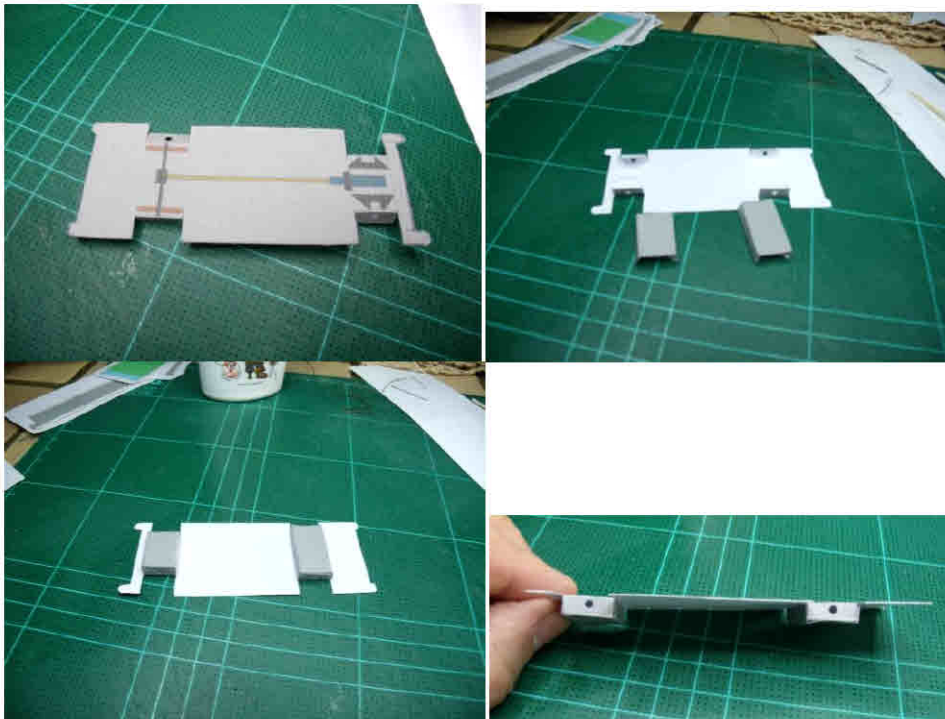
I used 150 – 180 g/m² paper. Print on A4. Sheets have different size. Watch your Printer settings.

Die Blätter sind unterschiedlich groß. Alles auf A4 ausdrucken. Dann passt es.

D= fold down U= fold up X= don't fold. Red lines= cut here.

There are three different grilles. Choose what u like. Es gibt drei verschiedene Kühlergrills. Nimm was dir gefällt.

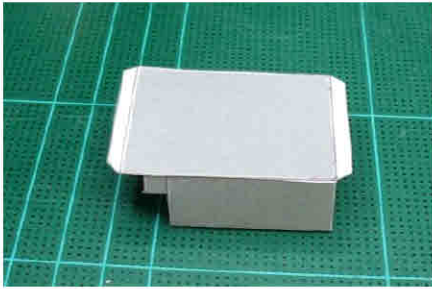
1. Cut out Number 1,2 and 3. 1,2 und 3 ausschneiden.
2. Cut holes for the axles. Löcher für die Achsen ausstechen.
3. Glue the three parts together as seen on the pics. Wie auf den Bildern zusammenkleben.



4. Now cut out parts 4 and 5. Fold and glue as shown. Big white tab of 5 is front and don't fold the tabs. 4 und 5 ausschneiden und falten. Bei 5 große Klebelasche vorne. Laschen nicht



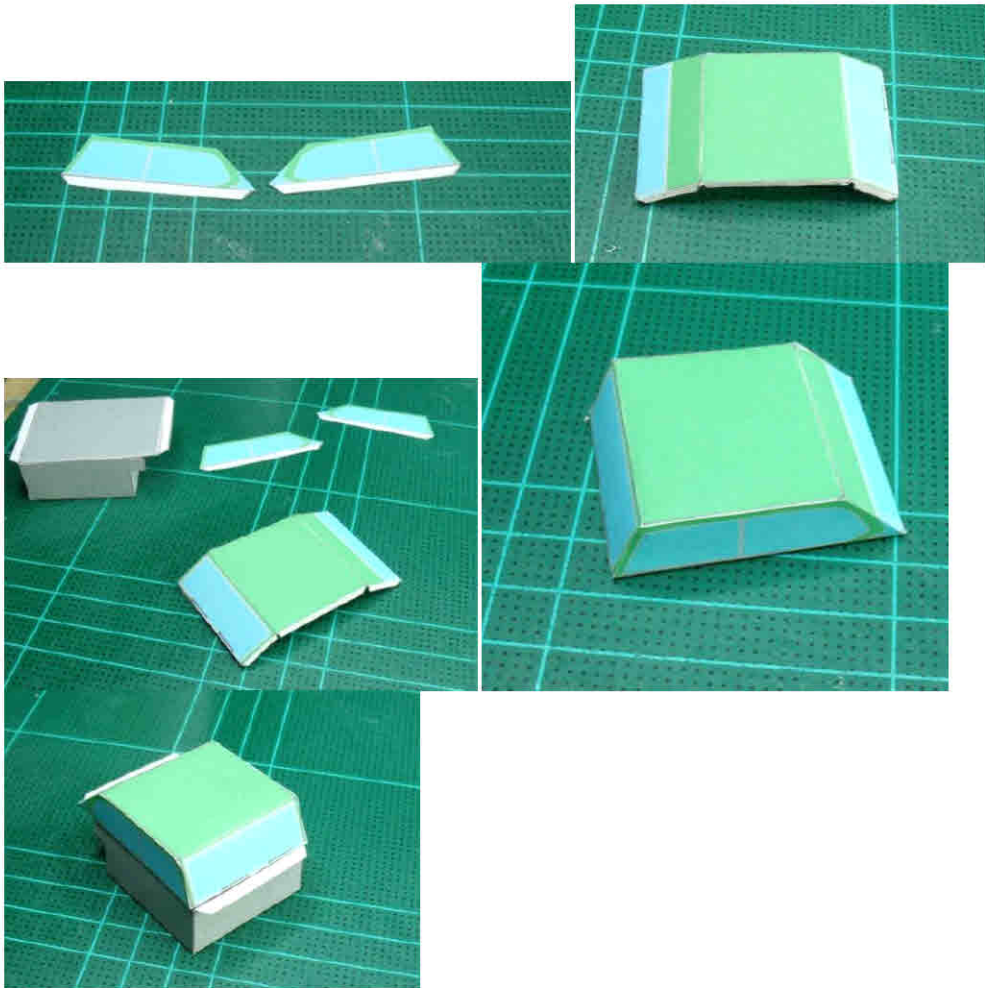
falten!



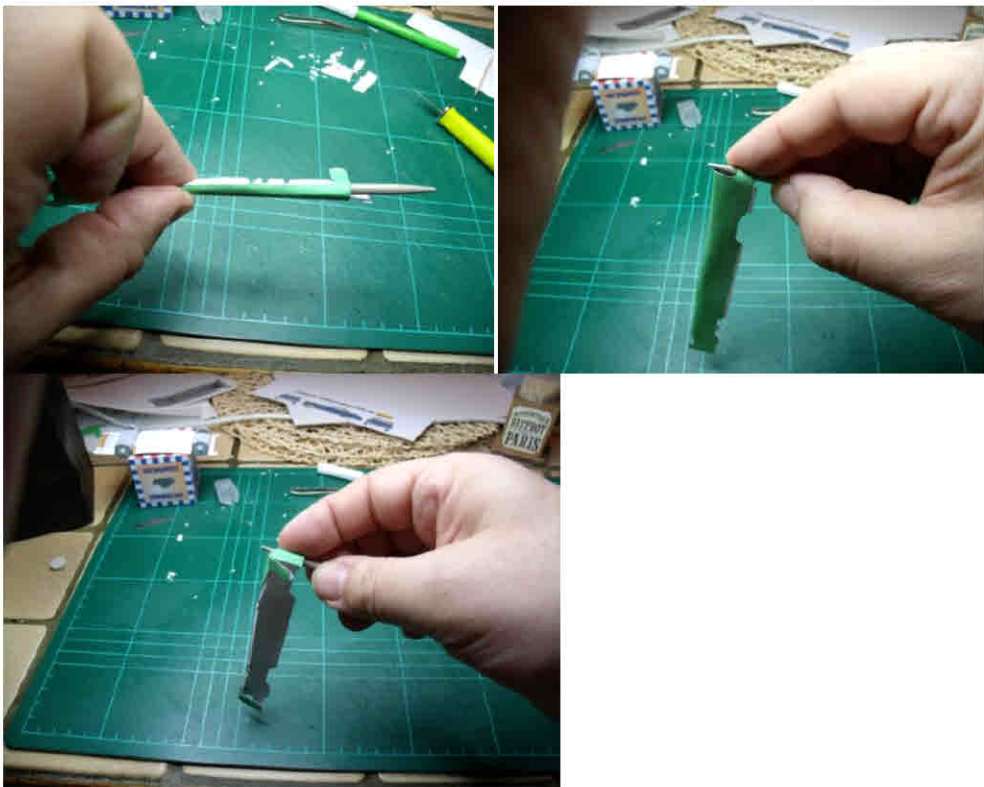
5. Now cut out the wheels (Parts W1-4). Choose the front for your wheels. Glue front and back onto cardboard. Together they will be 4mm thick. Punch holes in the middle for toothpicks. Wrap the tyre around. Glue them on the toothpick ends and close the step with the hubcaps. The coloured (C1-2) parts are needed for the continental kit. Räder ausschneiden(W1-4). Es gibt mehrere Möglichkeiten für die Vorder- und Rückseite. Auf Karton aufkleben. Gesamtstärke 4mm. Löcher in die Mitte stechen. Auf Zahnstocher kleben. Mit Radkappen abschliessen. Die farbigen Teile(C1-2) sind für das Continental Kit.



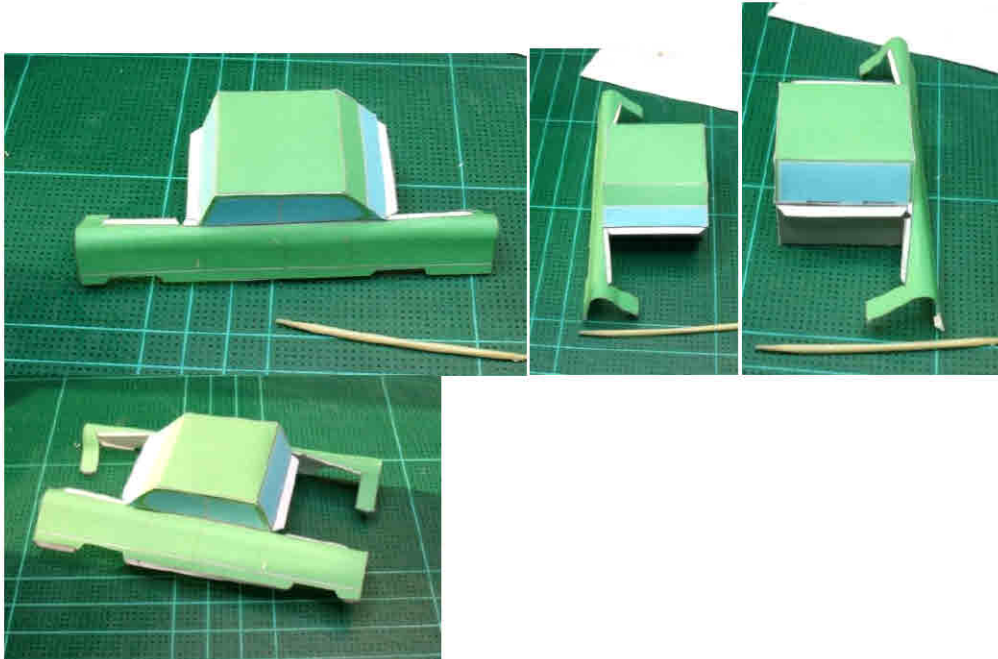
6. Now cut out roof(Part 8) and sidewindows (Parts 6 and 7). Glue together carefully and glue the whole thing on top of Nr. 5. Jetzt Dach und Seitenfenster (Nr. 6,7,8) ausschneiden und sorgfältig zusammenkleben. Alles auf 5 aufkleben.



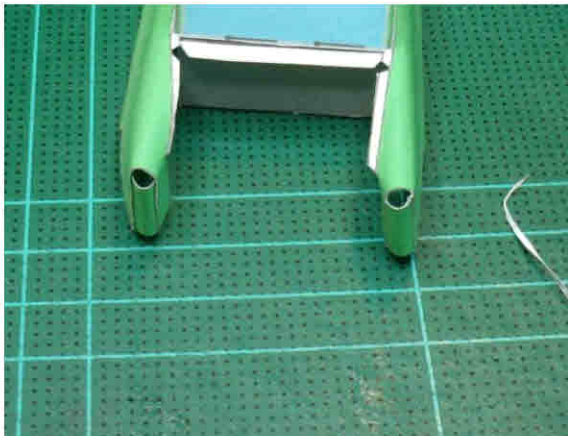
7. Cut out the big parts 9 and 10. Round it as shown. Use a stick of 4mm diameter. U need to do the same with front and back ends. Die Seitenteile 9 und 10 ausschneiden und wie im Foto über einen 4mm Stab runden. Die Enden der Teile werden genauso gerundet.



8. Glue this parts on Nr. 4 as shown. Regard front and back ends. Diese Teile jetzt auf Nr 4 kleben wie gezeigt. Auf Vorne und Hinten achten.



9. Close front and back ends. Die Enden schliessen.

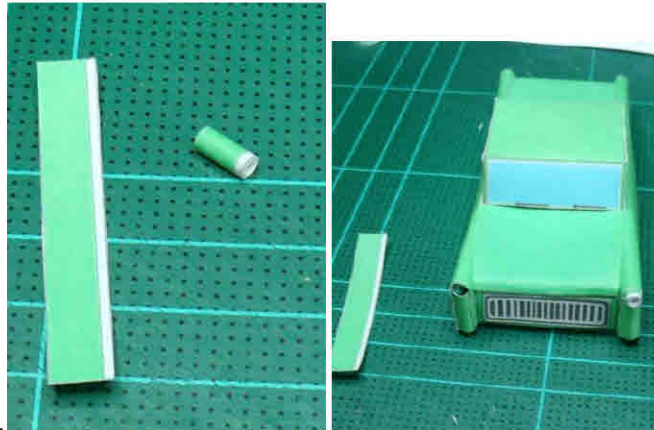


10. Now cut out front end 11 and trunk end 12 and the grille 11a u like. Glue grille on front end. Place the ends between the fenders and glue in position of the lines. Die beiden Enden 11 und 12 und den gewünschten Grill 11a ausschneiden. Grill auf die Vorderseite kleben. Die beiden Enden zwischen die Kotflügel kleben an die Linien kleben.



11. Now roll the base for the front lights 14. Diameter is 4mm. Glue in the holes of fender ends. And glue the glasses on the base. Lange Streifen 14 für die Scheinwerferbasis auf 4 mm

Durchmesser rollen und in die Löcher stecken und kleben. Scheinwerfergläser vorne



aufkleben.



12. Fold the backlights 13. Push them in position from the inside of the fenders. Glue. Rücklichter 13 falten und von hinten durch die Löcher stecken und festkleben.



13. The parts for trunk 16 and hood 15 are both a little too big. Cut them until they fit in position. Roll ends down. Die Teile für die beiden Hauben 15 und 16 sind zu groß. Sie müssen in Form geschnitten werden. Vorderkante runden.
14. Now glue the car onto its chassis. Start with the middle. Jetzt die Karosserie auf das Fahrgestell kleben. In der Mitte beginnen.
15. Now finish with the chrome parts. U are free to use what u want. For the Continental kit use two chrome stripes, glue them together and fold a square frame. Glue the spare wheel on the frame after u glued it on the back. Zum Schluss Chromteile aufkleben. Hier ganz nach Wunsch verfahren. Für das Ersatzrad einen Rahmen aus zwei Chromstreifen herstellen und auf die Karosserie kleben. Dann Ersatzrad einkleben.



Copyright Michael Golke 2014